



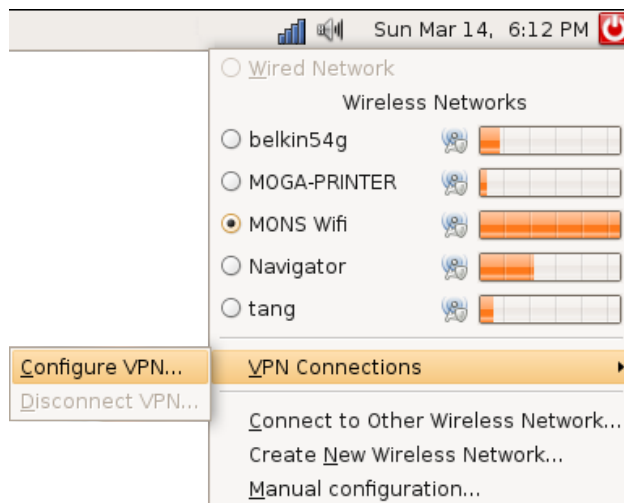
Installing services for Linux

This tutorial's goal is to explain you how to install PrairieDog on Linux distros. I will start from scratch and suppose you are a pure beginner.

First of all, you have to download and install the package which can manage PPTP Tunnels by tapping this command line in your terminal:

```
sudo apt-get install network-manager-pptp
```

Follow the instructions and you are now ready configure VPN services through a GUI interface. First question: where can I see the changes ?



Now you have got a *VPN Connections* label. Choose *Configure VPN* . The following window will pop up:

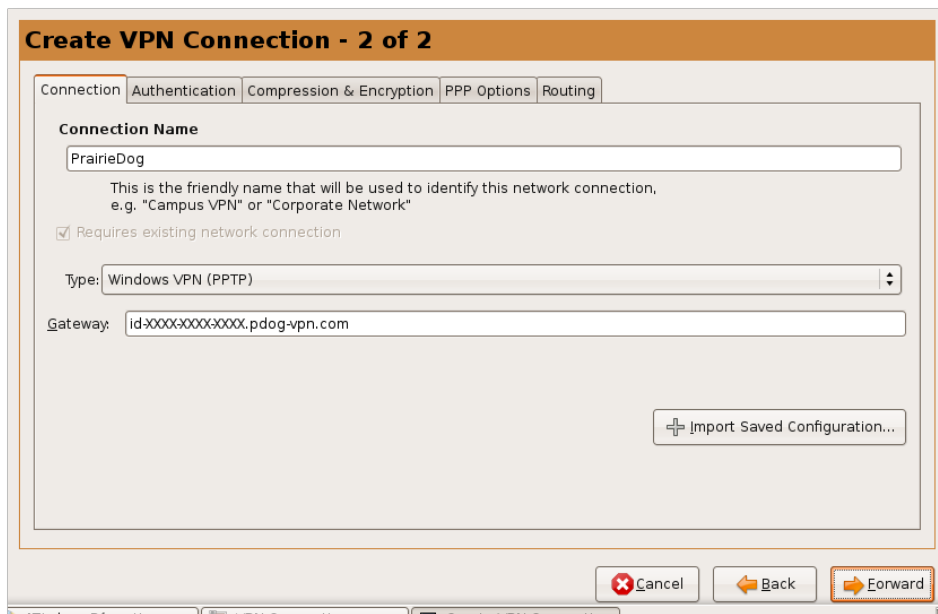


You can see that there is no connection, so we will create one: click *Add*. The next windows is not interesting, click *Forward*.

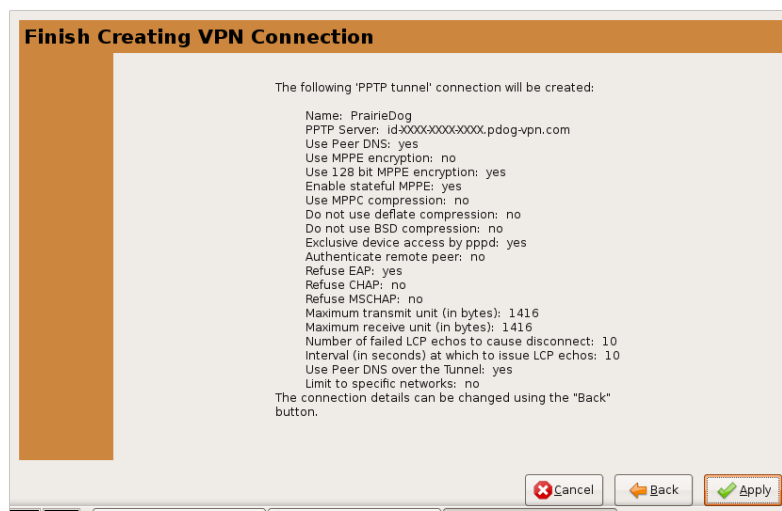


For the next step, you need information that you received by email once you have subscribed to our services:

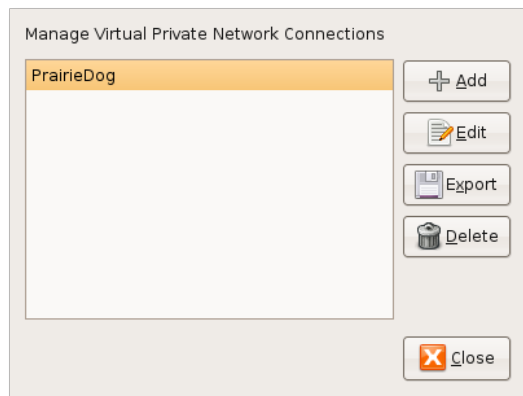
- *Host name of destination*: something like `id-XXXX-XXXX-XXXX.pdog-vpn.com`
- Put this in the field *Gateway*, and choose a name for this VPN connection.



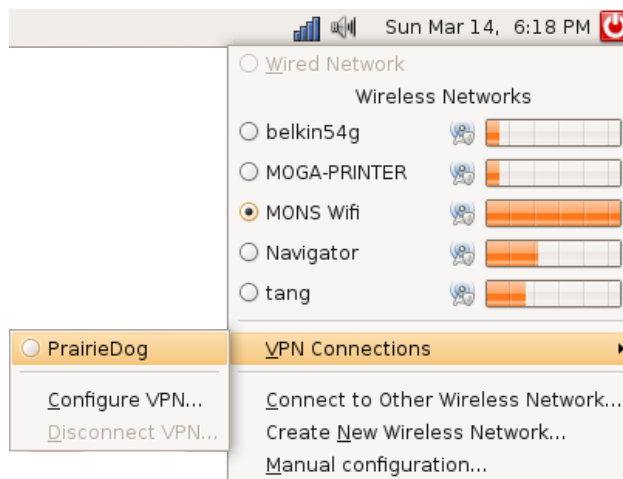
Then click *Forward* and *Apply* in the next window:



You can see that we have create a new VPN connection:

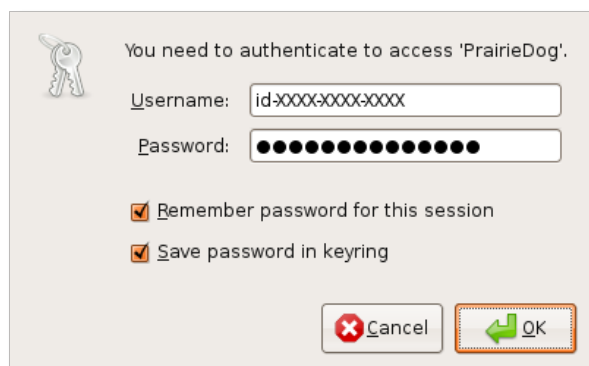


Click on *Close*. The last step is to connect to the service:



Choose the new VPN connection. A window will pop up asking you to enter information you've received by mail:

- *User Name* : something like id-XXXX-XXXX-XXXX
- *Password* : something like XXXX-XXXX-XXX



Now check the Wifi status icon in the taskbar:



Not connected



Connecting



Connected

Once you are connected you can enjoy our services !